

---

MANUALE D'USO

IT

---

INSTRUCTION MANUAL

EN

---

NOTICE D'UTILISATION

FR

---

GEBRAUCHSANWEISUNG

DE

---

GEBRUIKSAANWIJZING

NL

---

MANUAL DE USO

ES

---

MANUAL DE INSTRUÇÕES

PT

---

ΕΝΤΟΙΧΙΖΟΜΕΝΟ ΠΛΥΝΤΗΡΙΟ ΠΙΑΤΩΝ

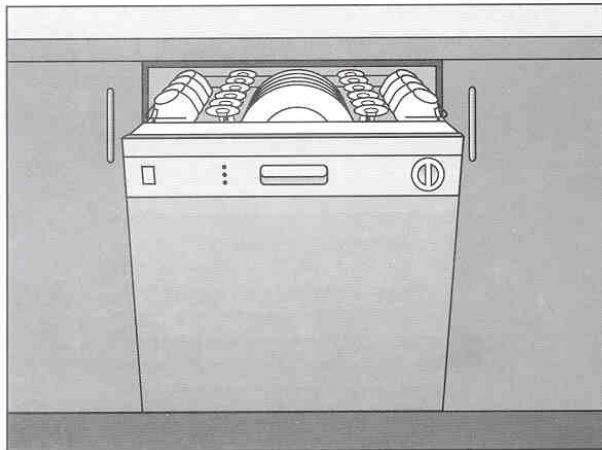
EL

---

KULLANIM KILAVUZU

TR

---



LAVASTOVIGLIE

DISHWASHER

LAVE-VAISSELLE

GESCHIRRSPÜLER

VAATWASSER

LAVAVAJILLAS

MÁQUINA DE LAVAR  
LOUÇA

ΠΛΥΝΤΗΡΙΟ ΠΙΑΤΩΝ

BULASIK MAKINASI

**teka**  
KÜCHENTECHNIK

1. Description of the controls _____	16
2. Troubleshooting _____	25

*Thank you for choosing one of our products.  
 You are advised to read this manual carefully; it contains all the information you need about the right conditions for the proper, safe use of your dishwasher.  
 The individual sections are laid out to provide you with a step-by-step guide to all your appliance's functions; the texts are easy to understand and are complete with detailed illustrations.  
 This user-friendly manual will provide answers to all your questions about use of the dishwasher.  
 For any other information about use and maintenance of the dishwasher, read the enclosed manual carefully.*



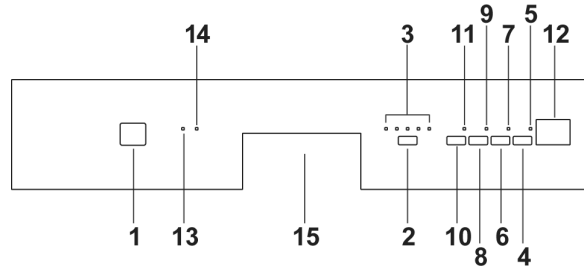
**USER INSTRUCTIONS:** *useful information is provided for the use of the washing programs and all the dishwasher's functions.*



## 1. Description of the controls

### 1.1 Front panel

All the dishwasher's controls and indicators are located on the front panel. Programming and option selection are only possible with the **door closed**.



1	ON/OFF BUTTON
2	SELECTION PROGRAM BUTTON
3	PROGRAM PHASE INDICATOR LIGHTS
4	START/PAUSE BUTTON
5	PROGRAM STARTED/STOP INDICATOR LIGHT (*)
6	PROGRAM DELAY BUTTON
7	PROGRAM DELAY LIGHT
8	"3/1" OPTION BUTTON
9	"3/1" OPTION LIGHT
10	1/2 LOAD WASH BUTTON
11	1/2 LOAD WASH LIGHT
12	3-FIGURE DISPLAY (remaining time, program delay, alarms)
13	NO SALT WARNING LIGHT
14	NO RINSE AID WARNING LIGHT
15	DOOR HANDLE

(\*) flashes while the program is in progress, stops flashing and remains on at the end of the program, or if the program is interrupted (intentionally or due to a malfunction).



## SETTING THE WASHING PROGRAM

To select the most suitable program for the dishes to be washed refer to the table below, which indicates the most appropriate program according to dish type and degree of soiling.

### DW 859 S

PROGRAM	SELECTION	TYPE AND GRADE DIRT	PROGRESS PROGRAM	DURATION	CONSUMPTION	
				MINUTES (2)	WATER LITRES (1)	POWER KWh (2)
SOAK		PANS AND DISHES IN WAITING OF COMPLETING THE LOAD	Cold prewash	15'	6	0,03
LIGHT		DISHES NOT VERY DIRTY	Wash at 45°C Cold rinse Rinse at 68°C Dry	70'	15	1,15
ECO (*)		PANS AND DISHES NOT VERY DIRTY BUT WITH DRY RESIDUALS	Wash at 50°C Cold rinse Rinse at 68°C Dry	180'	14	1,05
NORMAL		PANS AND DISHES DIRTY AND WITH DRY RESIDUALS	Cold prewash Wash at 65°C Cold rinse Rinse at 68°C Dry	100'	20	1,40
SUPER		PANS AND DISHES VERY DIRTY AND WITH DRY RESIDUALS	Prewash at 45°C Wash at 70°C 2 cold rinses Rinse at 70°C Dry	115'	24	1,77

**Only** run the soak program with half loads.

The **HALF LOAD** option (10) - 3/1 (8) is available for all programs **except the soak program**.

(\*) Reference program as per EN 50242 standard.

(1) Average power consumption with the softener set on **level 2**.

(2) The cycle duration and power consumption may vary according to the water and room temperatures, and the type and amount of dishes.

*The washing cycle will not take place if the dishwasher door is left open or not properly closed.*



## LP7 850

PROGRAM	SELECTION	TYPE AND GRADE DIRT	PROGRESS PROGRAM	DURATION	CONSUMPTION	
				MINUTES (2)	WATER LITRES (1)	POWER KWh (2)
SOAK		PANS AND DISHES IN WAITING OF COMPLETING THE LOAD	Cold prewash	15'	6	0,03
LIGHT		DISHES NOT VERY DIRTY	Wash at 45°C Cold rinse Rinse at 68°C Dry	70'	15	1,15
ECO (*)		PANS AND DISHES NOT VERY DIRTY BUT WITH DRY RESIDUALS	Cold prewash Wash at 50°C Rinse at 64°C Dry	180'	14	1,05
AUTO 60-70		PANS AND DISHES DIRTY AND WITH DRY RESIDUALS	Cold prewash Wash at 50°C Wash at 65°C Cold rinse Rinse at 70°C Dry	(**)	(**)	(**)
SUPER		PANS AND DISHES VERY DIRTY AND WITH DRY RESIDUALS	Prewash at 45°C Wash at 70°C 2 cold rinses Rinse at 70°C Dry	115'	24	1,77

**Only** run the soak program with half loads.

The **HALF LOAD** option (10) - 3/1 (8) is available for all programs **except the soak program**.

(\*) Reference program as per EN 50242 standard.

(\*\*) When the "AUTO 60-70" program is selected, the dishwasher recognises the type of dirt and automatically adapts the washing parameters and washing stages as appropriate.

(1) Average power consumption with the softener set on **level 2**.

(2) The cycle duration and power consumption may vary according to the water and room temperatures, and the type and amount of dishes.

## TABLE FOR CERTIFICATION BODIES

Reference standard	EN 50242
Reference program	ECO
Load	12 place-settings
Type of detergent	B
Amount of detergent	30 g
Rinse aid setting	5/6



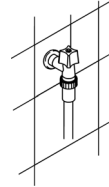
## 1.2 Washing programs

The dishwasher is equipped with a control panel and an **3-FIGURE DISPLAY (12)**, described in chapter "1. Description of the controls", from which it is possible to carry out all the power switch-on, switch-off and programming operations.



**Before starting a washing program make sure that:**

- The water supply tap is **open**.
- The **correct amount of detergent** has been added to the **dispenser**.
- The baskets have been **correctly loaded**.
- The spray arms are able to **rotate freely** and without obstruction.
- The dishwasher door is **securely closed**.

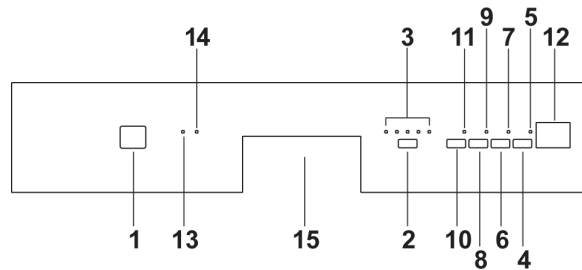


### PROGRAMMING

In this dishwasher model all the programming operations are possible only with closed door. With open door, on the **3-FIGURE DISPLAY (12)** will appear the symbols -- and the **PILOT LIGHT PROGRAMS (3)** remains out.

### SELECTION PROGRAM

Keep pressing the **PROGRAM SELECTION** button (2) until the indicator light corresponding (3) to the desired program illuminates.





### CANCELLING THE CURRENT PROGRAM

To annul the current program, press the **START/PAUSE** button (4) for a few seconds, until the **PROGRAM STARTED** light (5) stops flashing. Now press the **START/PAUSE** button (4) again until "P0" appears on the display (about **10 seconds**).

### CHANGING THE PROGRAM

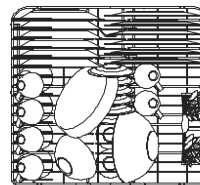
To modify the program keep the **START/PAUSE** button (4) pressed for a few seconds, until the **PROGRAM STARTED** indicator light (5) stops flashing, then select the new program following the instructions provided above; press the **START/PAUSE** button (4) again and keep it pressed for a few seconds, until the indicator light (5) starts to flash again.

### HALF LOAD WASH SETTING

(available in all programs except the soak program)

This function is ideal for small loads and saves water and electricity. It is controlled by the **HALF LOAD** button (10) and allows washing in the upper basket only.

**IMPORTANT:** at the end of the program remember to **deactivate the function** to ensure the next wash is not also carried out in half load mode **by mistake**.



*A cutlery basket can be placed in the **upper basket**, while the **lower basket must be left empty**.*

**CAUTION:** *there is no point in loading dishes and cutlery in the lower basket, since the jet of water will only reach the upper basket.*



## DELAYING THE PROGRAM (available in all programs except the soak program)

The **PROGRAM DELAY** button (6) can be pressed to delay the start of the washing program by up to **12 hours**. This means that the dishwasher can be operated at the time of day of your choice.

Press the **PROGRAM DELAY** button (6) again; the **3-FIGURE DISPLAY** (12) will show the number of hours of delay with which the appliance will start.

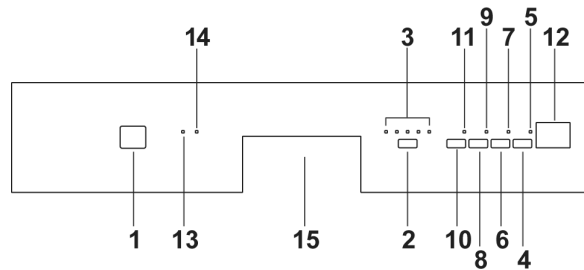
After setting the delay, start the program: press the **START/PAUSE** button (4) for a few seconds, until the **PROGRAM STARTED** light (5) starts flashing.

The appliance will prewash the dishes, after which the "program delay" set previously will come into effect.

To cancel the program delay once the wash has started, proceed as follows:

- press the **START/PAUSE** button (4) for a few seconds, until the **PROGRAM STARTED** light (5) stops flashing;
- press the **PROGRAM DELAY** button (6) several times until the program delay returns to zero;
- press the **START/PAUSE** button (4) to start the program.

**N.B.:** It is not possible to select the "delay program" when the program have already began.







### "3/1" OPTION BUTTON

(available in all programs except the soak program)

By pressing the button (8) you activate the "3/1" option, confirmed when the relative light comes on. This option has been studied for the use of dishwashing powder or tablets with integrated substances in place of regenerating salt or rinse-aid known on the market as "3 in 1" or "triple action" products; in this case the dishwasher will use the product in an optimal way avoiding salt and rinse-aid consumption, which could already be found in the dishwasher.

**Note:** When selecting the "3/1" button, it is normal that the salt and rinse-aid lights remain on, if their containers are empty.



#### **TO SAVE ON ENERGY! ... AND PROTECT THE ENVIRONMENT**

- Always try to run the dishwasher **fully loaded**.
- Do not wash the dishes in running water.
- Use the washing program that is **most appropriate** for each type of load.
- Do not carry out any preliminary rinsing.
- If available, connect the dishwasher to a hot water supply up to 60°C.

#### **TO CUT DOWN ON DETERGENT CONSUMPTION! ... AND PROTECT THE ENVIRONMENT**

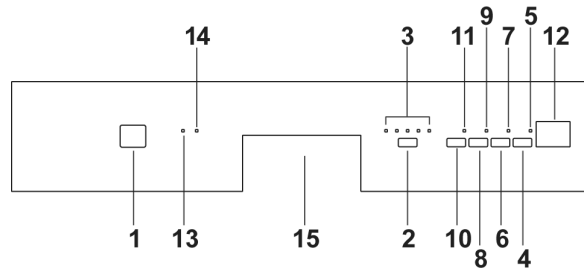
*The phosphates contained in dishwasher detergents are harmful to the environment. To avoid using excessive amounts of detergent and to save on electricity, observe the following:*

- **separate** the more delicate items from dishes that are more resistant to aggressive detergents and high temperatures;
- **do not pour** the detergent directly on the dishes.



## ADJUSTING THE WATER SOFTENING SYSTEM (available in all programs except the soak program)

The dishwasher is equipped with an electronic device for adjusting the water softening setting according to the hardness of the water. To adjust the water softening setting, proceed as follows.



- Keep the **PROGRAM DELAY** button (6) pressed for a few seconds, until the **H-** symbol, followed by the set value, appears on the **3-FIGURE DISPLAY (12)**.
- The **PROGRAM DELAY** button (6) can be pressed again to select the most suitable hardness value (**H1, H2...H5**). Refer to the "Water hardness table" to select the value.
- To exit the programming mode press the **START/PAUSE** button (4) or do not touch the keypad for **2 seconds** to allow the system to exit the mode automatically.

### WATER HARDNESS TABLE

WATER HARDNESS		SETTING
German Degrees (°dH)	French Degrees (°dF)	
0 - 4	0 - 7	H 0
5 - 15	8 - 25	H 1
16 - 23	26 - 40	H 2
24 - 31	41 - 60	H 3
32 - 47	61 - 80	H 4
48 - 58	81 - 100	H 5

Contact your local water board for information on the hardness of your water supply.



### STARTING THE DISHWASHER

After carrying out all the operations described above correctly, to start the dishwasher simply press the **START/PAUSE** button (4) for a few seconds until a beep sounds (the **PROGRAM STARTED** (5) light starts to flash). The **3-FIGURE DISPLAY** (12) will show the duration of the program in minutes. The duration time is only approximate, because it depends on the washing conditions (quantity of dishes, water temperature, etc.), and is also continually updated as the washing program progresses.



The **3-FIGURE DISPLAY** (12) shows the estimated duration of the washing program.



If it is necessary to open dishwasher door during the washing cycle, there will be a **1-minute delay** before the program can be resumed. After correctly closing the door, press the **START/PAUSE** (4) button **again**. This operation may negatively affect the progress of the washing cycle.

### END PROGRAM

The end of the program is indicated by a short signal acoustic and from the “End” visual notification on **3-FIGURE DISPLAY** (12). By pressing the **PROGRAM SELECTION** button (2), the “End” visual signal will vanish from the display and the dishwasher is ready to continue a new cycle, the same thing happens when closing or opening the door or by switching on-off the machine.

### REMOVING THE DISHES

At the end of the washing program, wait at least **20 minutes** before removing the dishes, to allow them to cool down. To prevent any water droplets on the upper basket from falling on the dishes in the lower basket, it is **advisable** to unload the lower basket first, and then the upper basket.



## 2. Troubleshooting

The dishwasher is equipped with a self-diagnostics system that is capable of detecting and signalling a number of possible faults.

### TABLE OF FAULTS DETECTED BY THE SELF-DIAGNOSTICS SYSTEM

FAULT	DESCRIPTION
<b>E1</b>	The anti-flooding system (where present) has been tripped.
<b>E2</b>	The water level limitation system has tripped.
<b>E3</b>	The appliance cannot heat the water.
<b>E4</b>	The temperature sensor is disconnected.
<b>E5</b>	The appliance cannot take in the water.
<b>E6</b>	The appliance cannot drain the water from the tank.
<b>E7</b>	The dishwasher cannot measure the precise water quantity that has been loaded.
<b>E8</b>	Problem on the water distribution system to the baskets.
<b>E9</b>	Water intake system malfunction.

- The **E1, E2, E3, E4, E8, E9** alarms provoke the “forcing” to end cycle of the running program.
- The **E5, E6** alarms interrupts the running program once the cause is resolved, it will bring back the execution of the program.
- The alarm **E7** is visualized at the end of the cycle that comes, however, brought to the end since the operation of the dishwasher is not harmed.

To “reset” an alarm is necessary:

- Open and close the door, or turn off and on the machine. At this point is possible to program the dishwasher again.



*If the malfunction persists, contact your authorised Service Centre.*

## TEKA GROUP

COUNTRY	CITY	COMPANY	CC	PHONE	FAX
Austria	Wien	KÜPPERSBUSCH GES.M.B.H.	43	1 - 86680 - 0	1 - 86680 - 72
Belgium	Zellik	B.V.B.A. KÜPPERSBUSCH S.P.R.L.	32	2466-8740	2466-7687
Chile	Santiago de Chile	TEKA CHILE S.A.	56	2 - 273.19.45	2 - 273.10.88
China	Shanghai	TEKA CHINA LTD.	86	21 - 6236 - 2375	21 - 6236 - 2379
Czech Republic	Brno	TEKA - CZ, S.R.O.	42	05 - 4921 - 0478	05 - 4921 - 0479
France	Paris	TEKA FRANCE S.A.R.L.	33	1 - 5836 - 4830	1 - 5836 - 4831
Greece	Athens	TEKA HELLAS A.E	30	210-9760283	210-9712725
Hungary	Budapest	TEKA HUNGARY KFT.	36	1 - 354-21-10	1 - 354-21-15
Indonesia	Jakarta	P.T. TEKA BUANA	62	21 - 39052 - 74	21 - 39052 - 79
Malaysia	Kuala Lumpur	TEKA KÜCHENTECHNIK (MALAYSIA) SDN. BHD.	60	3 - 762.01.600	3 - 762.01.626
Mexico	Mexico D.F.	TEKA MEXICANA S.A. DE C.V.	52	555 - 762.04.90	555 - 762.05.17
Poland	Pruszków	TEKA POLSKA SP. ZO.O.	48	22-738.32.80	22-738.32.89
Portugal	Ilhavo	TEKA PORTUGUESA LTDA.	351	234 - 32.95.00	234 - 32.54.57
Russia	Moscow	TEKA RUS LLC	7	095 - 737 - 4689	095 - 737 - 4690
Singapore	Singapore	TEKA SINGAPORE PTE LTD.	65	6 - 73-42415	6 - 73-46881
Thailand	Bangkok	TEKA (THAILAND) CO. LTD.	66	2 - 5164954	2 - 9021484
The Netherlands	Zoetermeer	TEKA B.V.	31	79 - 345.15.89	79 - 345.15.84
Turkey	Istanbul	TEKA TEKNİK MUTFAK A.S.	90	212 - 274.61.04	212 - 274.56.86
U.K.	Abingdon	TEKA PRODUCTS (UK) LTD.	44	1235 - 86.19.16	1235 - 83.51.07
U.S.A.	Tampa	TEKA USA, INC.	1	800-419-9344	813-228-8604
Venezuela	Caracas	TEKA ANDINA, S.A.	58	212 - 291.28.21	212 - 291.28.25



### Teka Industrial S.A.

Cajo 17  
39011 Santander (Spain)  
Tel.: 34 - 942 - 35 50 50  
Fax: 34 - 942 - 34 76 94  
<http://www.teka.net>

### Teka Küchentechnik GmbH

Sechsheldener Str. 122  
35708 Haiger (Germany)  
Tel.: 49 - 2771 - 8141-0  
Fax: 49 - 2771 - 8141-10  
<http://www.teka.net>

19 590 1455 00